

PART OF THE NW. 1/4, OF SECTION 25, T.5N., R.1W., S.L.B. & M.
CEDAR COVE ESTATES 2ND AMENDMENT

715

IN WEBER COUNTY

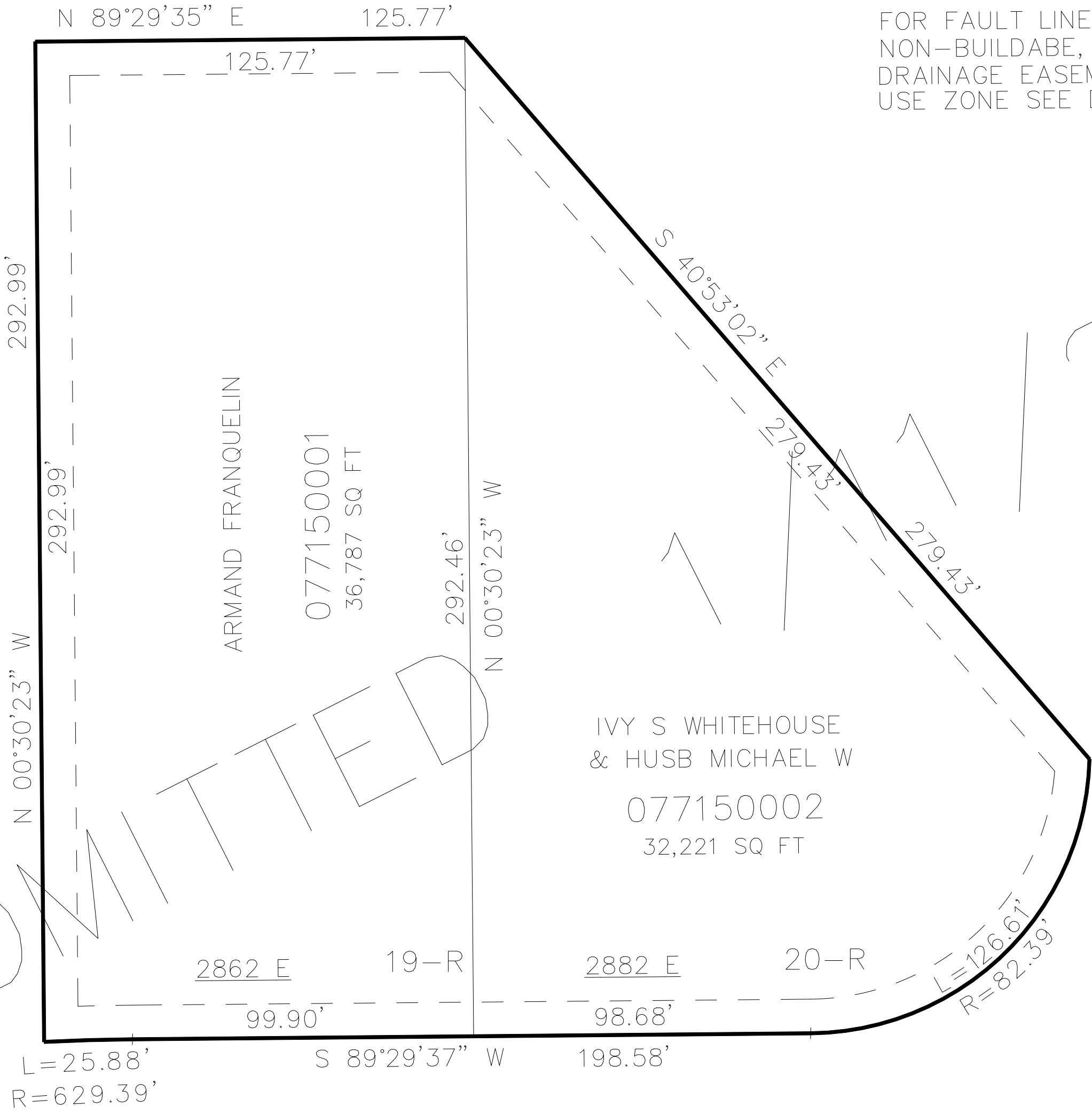
TAXING UNIT: 54

SCALE 1" = 30'

SEE PAGE 619

FOR FAULT LINE EASEMENT,
NON-BUILDABLE, NON-HABITABLE,
DRAINAGE EASEMENT, RESTRICTED
USE ZONE SEE DEDICATION PLAT.

SEE PAGE 619



BYBEE DRIVE (PRIVATE ROAD)

10' UTILITY & DRAINAGE EASEMENTS EACH
SIDE OF PROPERTY LINES AS INDICATED
BY DASHED LINES EXCEPT AS OTHERWISE
SHOWN.

FOR COMPLETE ENG DATA SEE
ORIGINAL DEDICATION PLAT IN
BOOK 69, PAGE 02 OF RECORDS.